



NATA LIGHTING CO.,LTD.  
www.nata.cn  
Email:info@nata.com  
Tel:+86-750-3770000 Fax:+86-750-3771111  
Address:380JinOu Road,GaoXin Zone,Jiang Men City,Guangdong,China

NT

Client:

LumCAT: 3-2835-L

Luminaire: 92.70.412.00

Report No: 2024302-B013

Ballast type: AC

Test No: 2024302-C013

Voltage(V): 34.090

LampCAT: LUMINUS CXM-14-AC40

Current(A): 0.530

Lamp flux(lm): 2575.0

Power (W): 18.067

Number of Lamps: 1

PF: 0.000

Length(mm): 0

Width(mm): 0

Phm Type: C

Height(mm): 0

### Photometric Results

Lumens(lm): 2183.47, Efficiency(%): 84.80% , Luminous Efficacy(lm/W): 120.85

Central intensity(cd): 3868.542, Maximum intensity(cd): 3874.395

Angle of maximum intensity: C=0.0  $\gamma$ =3.0

Beam Angle(50%Imax): [C0/180]Total=44.2

[C90/270]Total=44.2

Field angle(10%Imax): [C0/180]Total=67.6

[C90/270]Total=67.6

Maximum s/h(1/2): C0\_180=0.72 C90\_270=0.72

Maximum s/h(1/4): C0\_180=0.69 C90\_270=0.69

Up flux rate of lamp(%): 0.00%

Down flux rate of lamp(%): 84.80%

Up flux rate of LUM(%): - -

Down flux rate of LUM(%): 100.00%

CIE Type : Direct lighting

Output flux ratio in  $\pi$  solid angle : 97.692%

Equipment: GMS1980  
Temperature(°C): 25.0

Date: 2024/3/02  
Humidity(%): 60.0%

Operator: NT07  
Distance(m): 7.65

$\gamma(^{\circ})$	Average I(cd)	Zonal F(lm)	Sum F(lm)	Eff Flux(%)	Eff Sum(%)
0.0	3868.542	0.000	0	0.00%	0.00%
1.0	3870.151	3.703	3.703	0.14%	0.17%
2.0	3872.931	11.114	14.816	0.43%	0.68%
3.0	3874.394	18.529	33.345	0.72%	1.53%
4.0	3868.323	25.917	59.263	1.01%	2.71%
5.0	3854.204	33.222	92.485	1.29%	4.24%
6.0	3826.479	40.364	132.849	1.57%	6.08%
7.0	3789.976	47.275	180.124	1.84%	8.25%
8.0	3735.403	53.858	233.982	2.09%	10.72%
9.0	3674.979	60.057	294.039	2.33%	13.47%
10.0	3600.728	65.842	359.881	2.56%	16.48%
11.0	3516.237	71.113	430.994	2.76%	19.74%
12.0	3421.211	75.836	506.831	2.95%	23.21%
13.0	3319.528	79.996	586.826	3.11%	26.88%
14.0	3196.777	83.408	670.234	3.24%	30.70%
15.0	3063.931	85.950	756.184	3.34%	34.63%
16.0	2924.135	87.742	843.926	3.41%	38.65%
17.0	2776.146	88.769	932.695	3.45%	42.72%
18.0	2621.940	89.003	1021.698	3.46%	46.79%
19.0	2457.053	88.364	1110.062	3.43%	50.84%
20.0	2283.680	86.769	1196.83	3.37%	54.81%
21.0	2122.743	84.612	1281.442	3.29%	58.69%
22.0	1946.809	81.779	1363.222	3.18%	62.43%
23.0	1784.190	78.286	1441.508	3.04%	66.02%
24.0	1610.334	74.216	1515.725	2.88%	69.42%
25.0	1456.881	69.742	1585.466	2.71%	72.61%
26.0	1319.675	65.541	1651.007	2.55%	75.61%
27.0	1192.703	61.466	1712.473	2.39%	78.43%
28.0	1078.423	57.500	1769.973	2.23%	81.06%
29.0	953.492	53.161	1823.134	2.06%	83.50%
30.0	826.923	48.071	1871.205	1.87%	85.70%
31.0	704.574	42.619	1913.824	1.66%	87.65%
32.0	577.017	36.716	1950.54	1.43%	89.33%
33.0	461.647	30.599	1981.14	1.19%	90.73%
34.0	366.687	25.068	2006.208	0.97%	91.88%
35.0	279.225	20.060	2026.267	0.78%	92.80%
36.0	201.859	15.318	2041.585	0.59%	93.50%
37.0	147.857	11.406	2052.991	0.44%	94.02%

$\gamma(^{\circ})$	Average I(cd)	Zonal F(lm)	Sum F(lm)	Eff Flux(%)	Eff Sum(%)
38.0	106.050	8.475	2061.466	0.33%	94.41%
39.0	67.601	5.927	2067.393	0.23%	94.68%
40.0	59.232	4.423	2071.817	0.17%	94.89%
41.0	54.689	4.057	2075.873	0.16%	95.07%
42.0	51.280	3.850	2079.723	0.15%	95.25%
43.0	48.588	3.699	2083.423	0.14%	95.42%
44.0	46.438	3.587	2087.009	0.14%	95.58%
45.0	44.323	3.488	2090.497	0.14%	95.74%
46.0	42.436	3.393	2093.89	0.13%	95.90%
47.0	40.688	3.306	2097.196	0.13%	96.05%
48.0	39.056	3.224	2100.42	0.13%	96.20%
49.0	37.506	3.144	2103.564	0.12%	96.34%
50.0	36.196	3.073	2106.637	0.12%	96.48%
51.0	34.923	3.009	2109.646	0.12%	96.62%
52.0	33.504	2.936	2112.582	0.11%	96.75%
53.0	32.136	2.855	2115.438	0.11%	96.88%
54.0	30.776	2.773	2118.211	0.11%	97.01%
55.0	29.364	2.685	2120.895	0.10%	97.13%
56.0	28.025	2.593	2123.488	0.10%	97.25%
57.0	26.840	2.509	2125.997	0.10%	97.37%
58.0	25.691	2.429	2128.426	0.09%	97.48%
59.0	24.675	2.355	2130.781	0.09%	97.59%
60.0	23.775	2.289	2133.07	0.09%	97.69%
61.0	22.970	2.231	2135.3	0.09%	97.79%
62.0	22.209	2.177	2137.477	0.08%	97.89%
63.0	21.558	2.129	2139.606	0.08%	97.99%
64.0	20.834	2.080	2141.686	0.08%	98.09%
65.0	20.066	2.024	2143.71	0.08%	98.18%
66.0	19.276	1.963	2145.673	0.08%	98.27%
67.0	18.691	1.909	2147.582	0.07%	98.36%
68.0	18.252	1.871	2149.454	0.07%	98.44%
69.0	18.047	1.852	2151.305	0.07%	98.53%
70.0	17.930	1.848	2153.153	0.07%	98.61%
71.0	17.842	1.849	2155.002	0.07%	98.70%
72.0	17.754	1.851	2156.853	0.07%	98.78%
73.0	17.608	1.849	2158.702	0.07%	98.87%
74.0	17.447	1.843	2160.545	0.07%	98.95%
75.0	17.169	1.829	2162.374	0.07%	99.03%

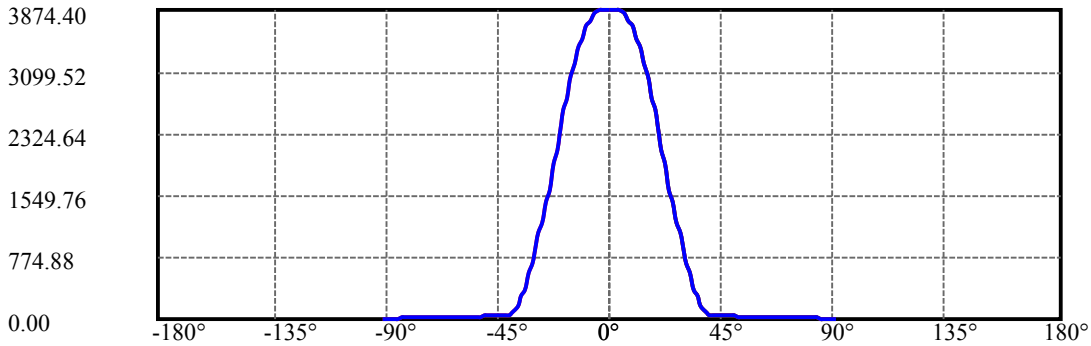
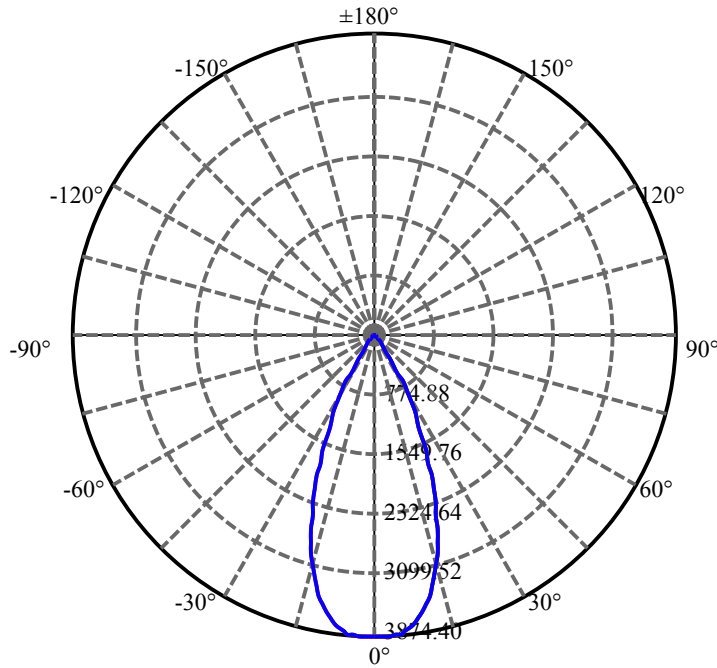
$\gamma(^{\circ})$	Average I(cd)	Zonal F(lm)	Sum F(lm)	Eff Flux(%)	Eff Sum(%)
76.0	16.825	1.805	2164.179	0.07%	99.12%
77.0	16.408	1.772	2165.95	0.07%	99.20%
78.0	15.947	1.732	2167.682	0.07%	99.28%
79.0	15.435	1.686	2169.369	0.07%	99.35%
80.0	14.894	1.635	2171.004	0.06%	99.43%
81.0	14.184	1.573	2172.576	0.06%	99.50%
82.0	13.475	1.500	2174.076	0.06%	99.57%
83.0	12.568	1.416	2175.492	0.05%	99.63%
84.0	11.712	1.323	2176.815	0.05%	99.70%
85.0	10.885	1.233	2178.048	0.05%	99.75%
86.0	10.256	1.156	2179.203	0.04%	99.80%
87.0	9.883	1.102	2180.306	0.04%	99.85%
88.0	9.664	1.071	2181.376	0.04%	99.90%
89.0	9.539	1.053	2182.429	0.04%	99.95%
90.0	9.488	1.043	2183.472	0.04%	100.00%

ZONAL LUMEN SUMMARY

Zone	Lumens	%Lamp	%Fixt
0-30	1871.20	72.67%	85.70%
0-40	2071.82	80.46%	94.89%
0-60	2133.07	82.84%	97.69%
0-90	2182.43	84.75%	99.95%
0-120	2182.43	84.75%	99.95%
0-180	2183.47	84.80%	100.00%
60-90	49.36	1.92%	2.26%
90-120	0.00	0.00%	0.00%
90-130	0.00	0.00%	0.00%
90-150	0.00	0.00%	0.00%
90-180	0.00	0.00%	0.00%
0-27.60	1746.78	67.84%	80.00%

ZONAL LUMEN SUMMARY

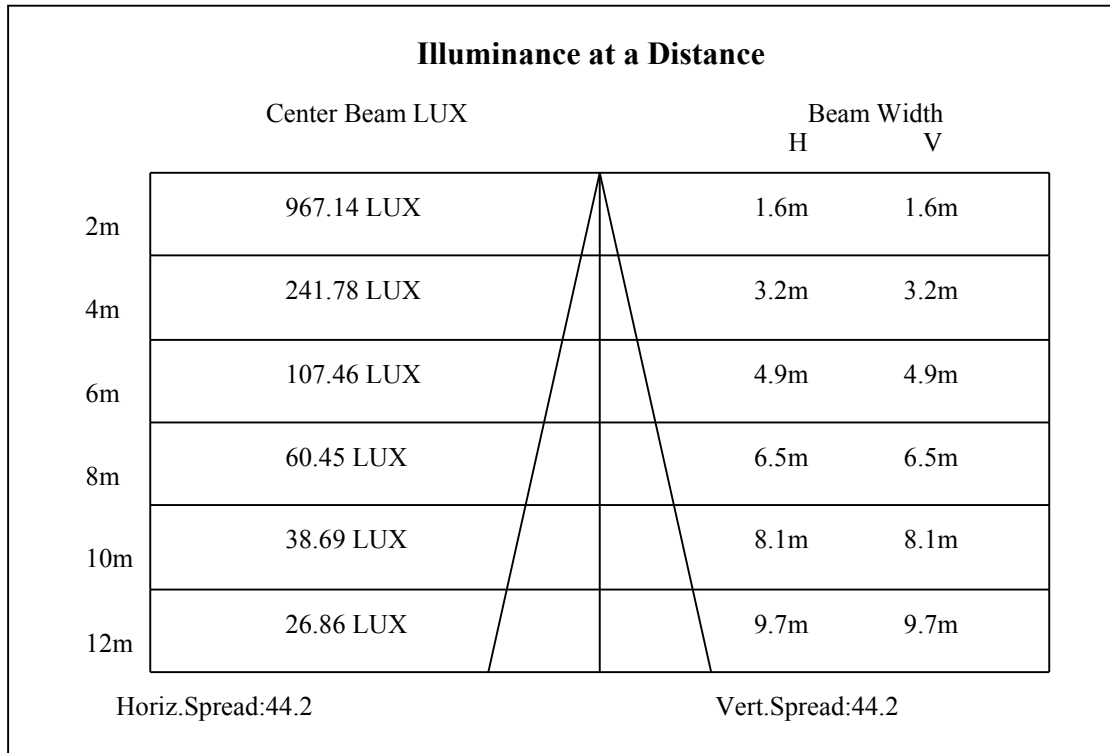
0-10	359.88
10-20	836.95
20-30	674.37
30-40	200.61
40-50	34.82
50-60	26.43
60-70	20.08
70-80	17.85
80-90	11.43
90-100	0.00
100-110	0.00
110-120	0.00
120-130	0.00
130-140	0.00
140-150	0.00
150-160	0.00
160-170	0.00
170-180	0.00

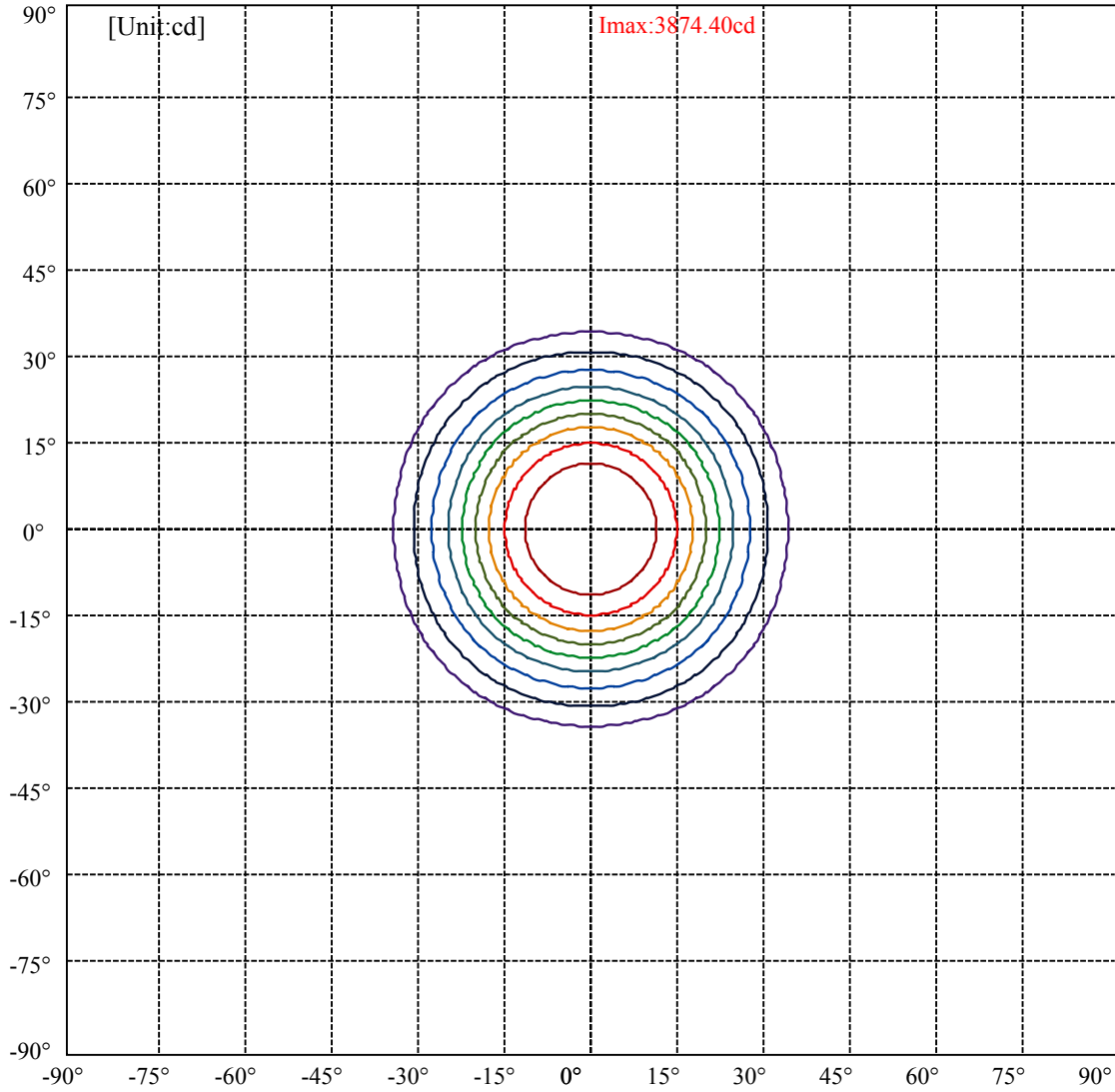


C0(Max): —————  
C0/C180: —————  
C90/C270: —————

Field angle(10%Imax):C0/180Left:36.8 Right:30.8  
:C90/270Left:36.8 Right:30.8

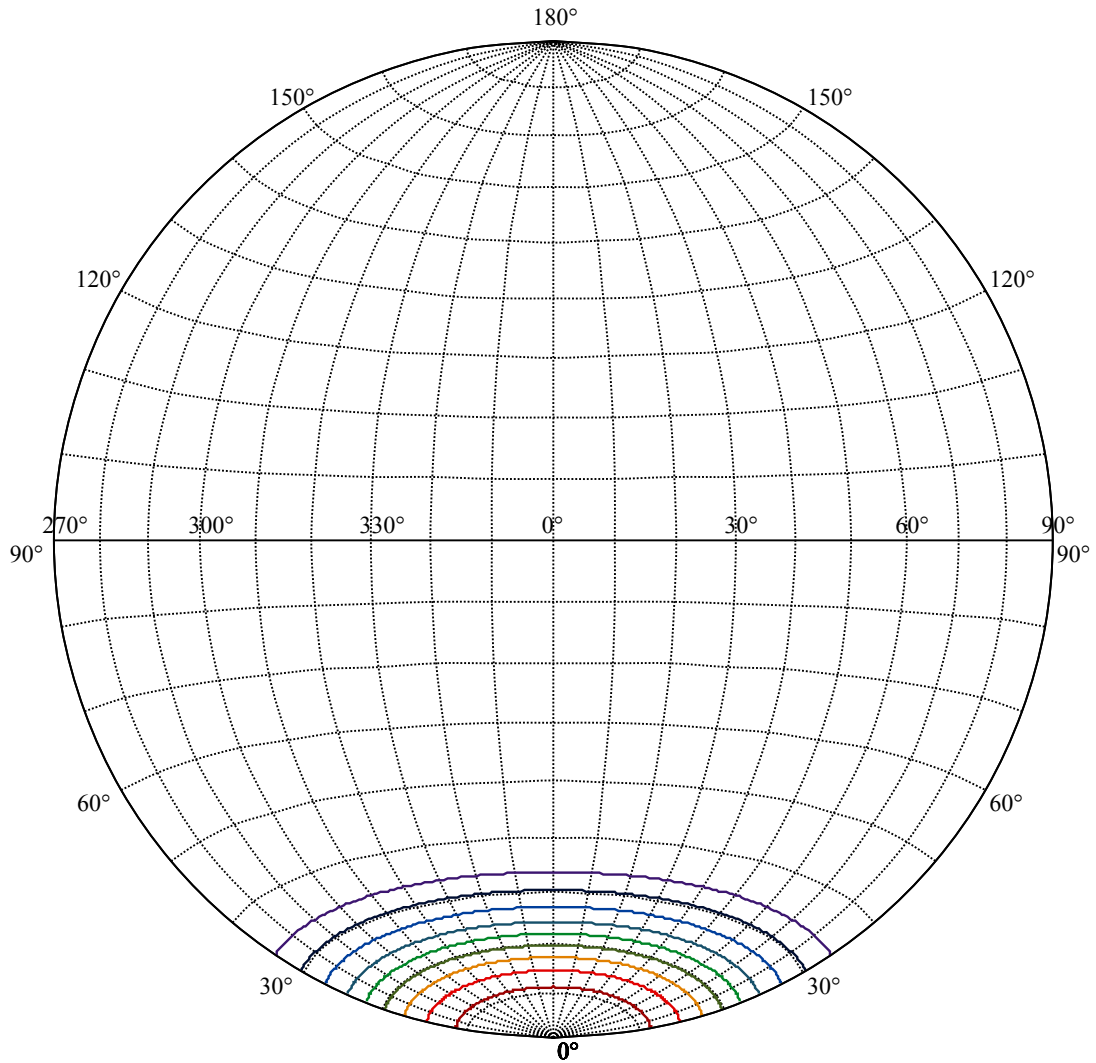
Beam Angle(50%Imax):C0/180Left:25.1 Right:19.1  
:C90/270Left:25.1 Right:19.1





(10%Imax) 387.44	—
(20%Imax) 774.879	—
(30%Imax) 1162.32	—
(40%Imax) 1549.76	—
(50%Imax) 1937.2	—
(60%Imax) 2324.64	—
(70%Imax) 2712.08	—
(80%Imax) 3099.52	—
(90%Imax) 3486.96	—





House

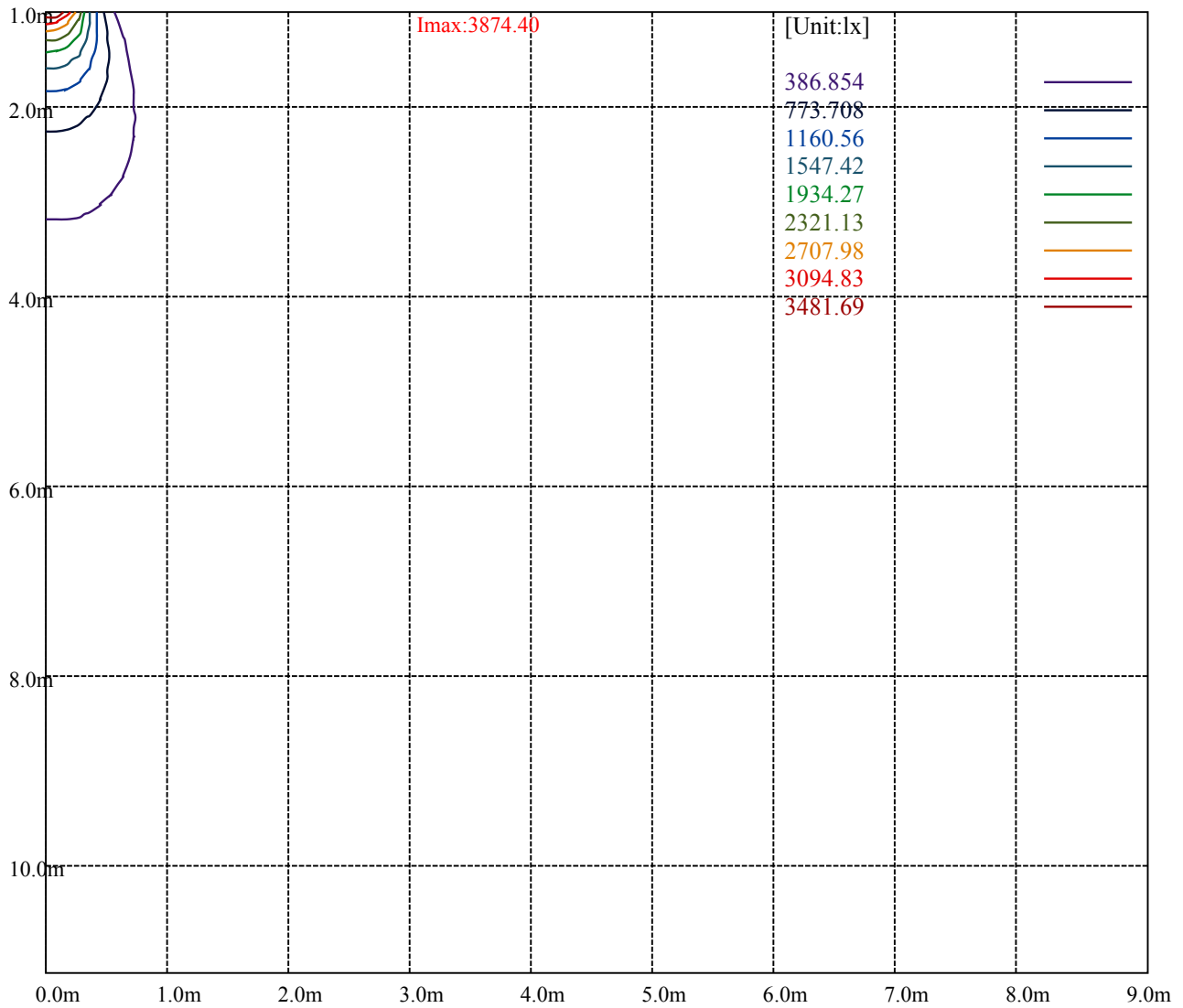
[Unit:cd]

Road

Imax:3874.40

(10%Imax)	387.44	—
(20%Imax)	774.879	—
(30%Imax)	1162.32	—
(40%Imax)	1549.76	—
(50%Imax)	1937.2	—
(60%Imax)	2324.64	—
(70%Imax)	2712.08	—
(80%Imax)	3099.52	—
(90%Imax)	3486.96	—





Luminance Table

$\gamma$	45	50	55	60	65	70	75	80	85
C0	0	0	0	0	0	0	0	0	0
C45	0	0	0	0	0	0	0	0	0
C90	0	0	0	0	0	0	0	0	0

L(Hor)(65)	L(Ver)(65)	L45(65)	L(Hor)(75)	L(Ver)(75)	L45(75)	L(Hor)(85)	L(Ver)(85)	L45(85)
0	0	0	0	0	0	0	0	0

Glare Table

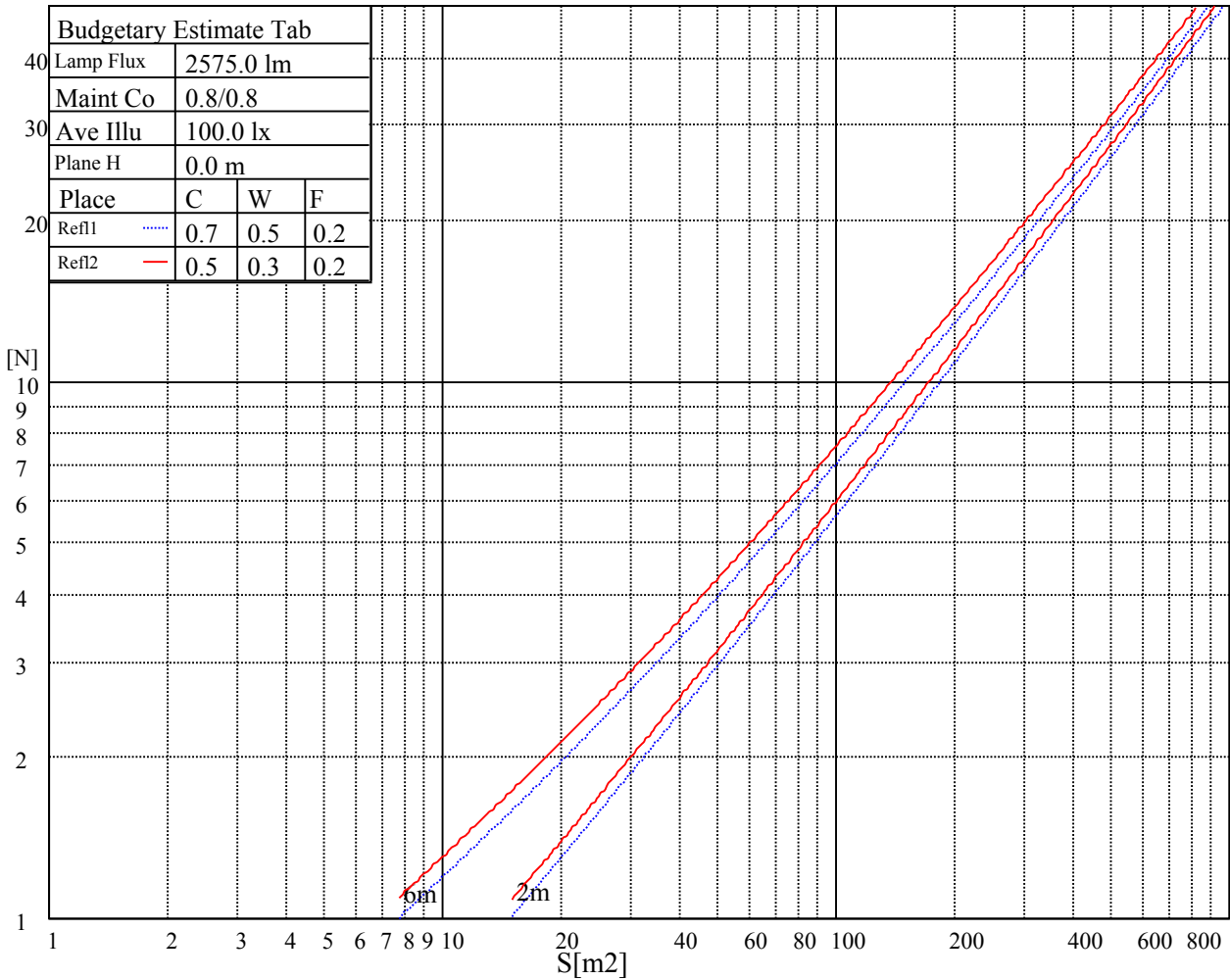
Glare	Quality	Service Values Illuminance(lx)							
1.15	A	2000	1000	500	<=300				
1.5	B		2000	1000	500	<=300			
1.85	C			2000	1000	500	<=300		
2.2	D				2000	1000	500	<=300	
2.55	E					2000	1000	500	<=300
		a	b	c	d	e	f	g	h

Luminance Limiting Curve

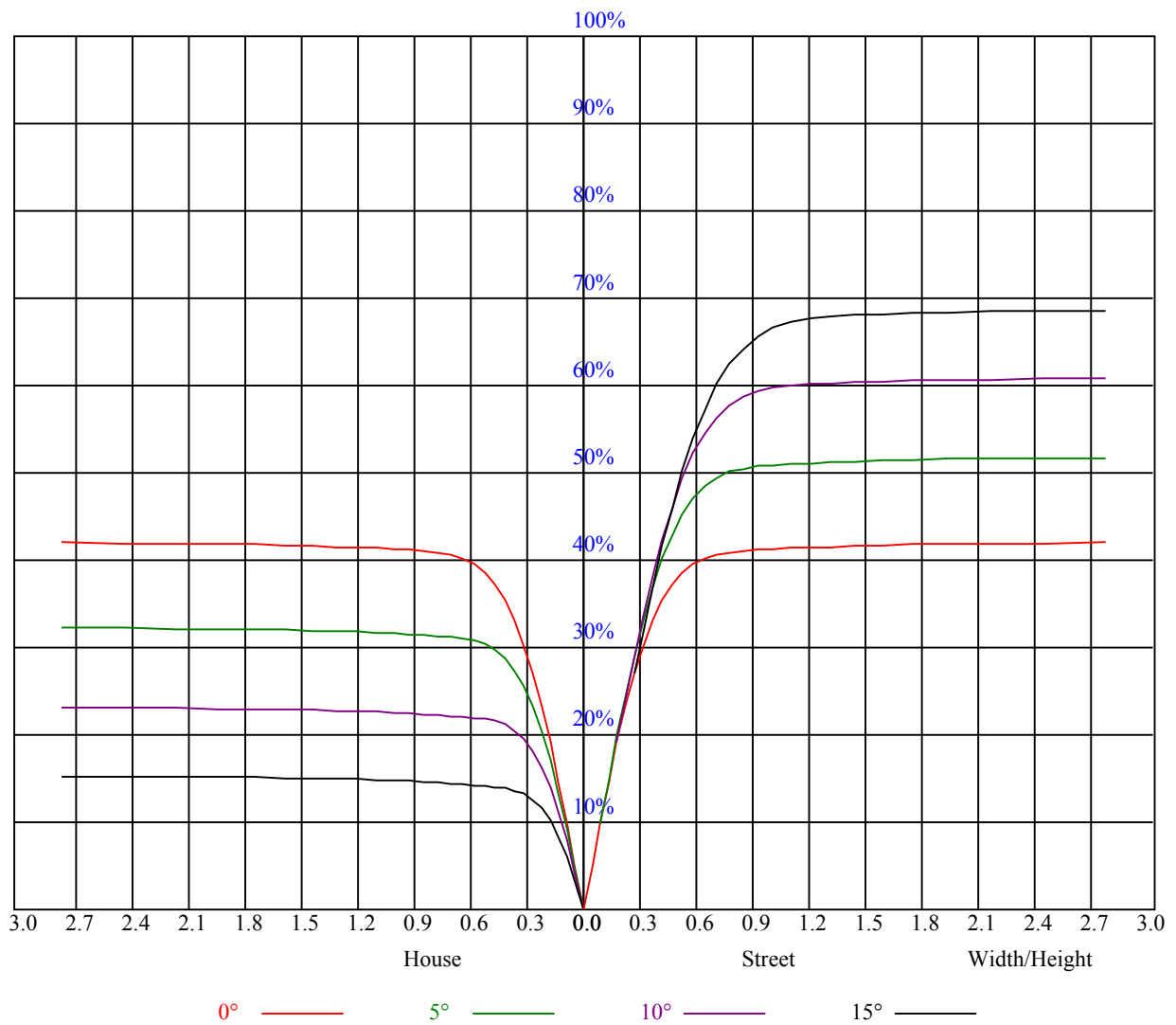


Illumination assessment according UGR											
Rf of Ceiling	70	70	50	50	30	70	70	50	50	30	
Rf of Wall	50	30	50	30	30	50	30	50	30	30	
Rf of Floor	20	20	20	20	20	20	20	20	20	20	
Room dimensions		Viewed crosswise					Viewed endwise				
X	Y										
2H	2H	非数字	非数字	非数字	非数字	非数字	非数字	非数字	非数字	非数字	
	3H	非数字	非数字	非数字	非数字	非数字	非数字	非数字	非数字	非数字	
	4H	非数字	非数字	非数字	非数字	非数字	非数字	非数字	非数字	非数字	
	6H	非数字	非数字	非数字	非数字	非数字	非数字	非数字	非数字	非数字	
	8H	非数字	非数字	非数字	非数字	非数字	非数字	非数字	非数字	非数字	
	12H	非数字	非数字	非数字	非数字	非数字	非数字	非数字	非数字	非数字	
4H	2H	非数字	非数字	非数字	非数字	非数字	非数字	非数字	非数字	非数字	
	3H	非数字	非数字	非数字	非数字	非数字	非数字	非数字	非数字	非数字	
	4H	非数字	非数字	非数字	非数字	非数字	非数字	非数字	非数字	非数字	
	6H	非数字	非数字	非数字	非数字	非数字	非数字	非数字	非数字	非数字	
	8H	非数字	非数字	非数字	非数字	非数字	非数字	非数字	非数字	非数字	
8H	12H	非数字	非数字	非数字	非数字	非数字	非数字	非数字	非数字	非数字	
	4H	非数字	非数字	非数字	非数字	非数字	非数字	非数字	非数字	非数字	
	6H	非数字	非数字	非数字	非数字	非数字	非数字	非数字	非数字	非数字	
	8H	非数字	非数字	非数字	非数字	非数字	非数字	非数字	非数字	非数字	
12H	12H	非数字	非数字	非数字	非数字	非数字	非数字	非数字	非数字	非数字	
	4H	非数字	非数字	非数字	非数字	非数字	非数字	非数字	非数字	非数字	
	6H	非数字	非数字	非数字	非数字	非数字	非数字	非数字	非数字	非数字	
	8H	非数字	非数字	非数字	非数字	非数字	非数字	非数字	非数字	非数字	
Variation with the observer position at spacings:											
S = 1.0H		非数字/非数字					非数字/非数字				
S = 1.5H		非数字/非数字					非数字/非数字				
S = 2.0H		非数字/非数字					非数字/非数字				
Standard tables:		BK0					BK0				
Uncorrected UGR		负无穷大					负无穷大				

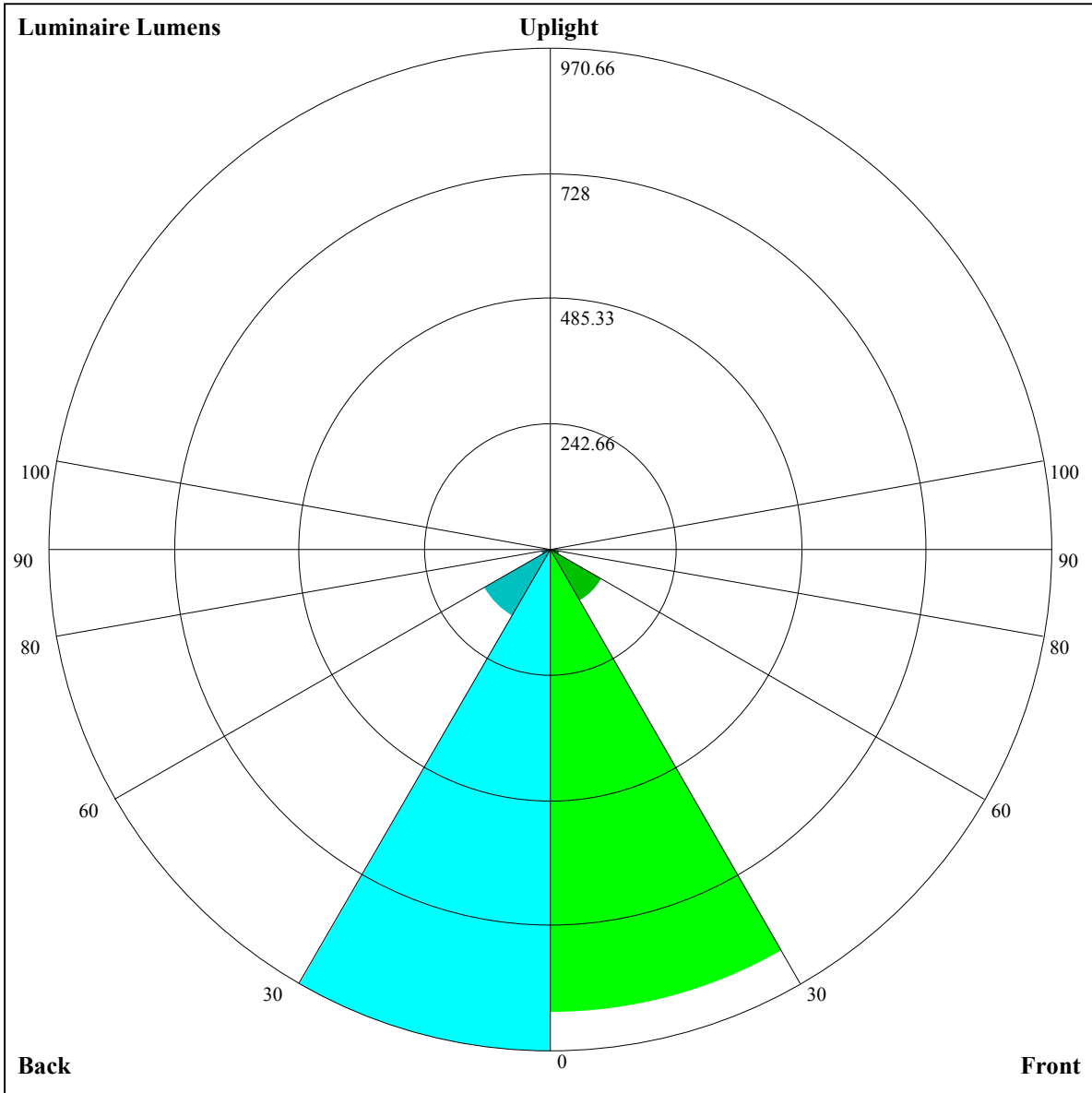
UGR calculation is based on CIE Publ. 117 ,S/H = 0.25



RHOCC	80			70			50			30			10			0
RHOW	50	30	10	50	30	10	50	30	10	50	30	10	50	30	10	0
RCR	COEFFICIENTS OF UTILIZATION RHOF=20 CU															
0	1.01	1.01	1.01	0.99	0.99	0.99	0.94	0.94	0.94	0.90	0.90	0.90	0.87	0.87	0.87	0.85
1	0.94	0.92	0.90	0.92	0.91	0.89	0.89	0.87	0.86	0.86	0.85	0.84	0.83	0.82	0.81	0.80
2	0.88	0.85	0.82	0.87	0.84	0.82	0.84	0.82	0.80	0.82	0.80	0.78	0.79	0.78	0.76	0.75
3	0.83	0.79	0.76	0.82	0.78	0.76	0.80	0.77	0.74	0.78	0.75	0.73	0.76	0.74	0.72	0.71
4	0.79	0.74	0.71	0.78	0.74	0.71	0.76	0.73	0.70	0.74	0.71	0.69	0.73	0.70	0.68	0.67
5	0.75	0.70	0.67	0.74	0.70	0.67	0.72	0.69	0.66	0.71	0.68	0.65	0.70	0.67	0.65	0.64
6	0.71	0.66	0.63	0.70	0.66	0.63	0.69	0.65	0.62	0.68	0.65	0.62	0.67	0.64	0.62	0.61
7	0.67	0.63	0.60	0.67	0.63	0.60	0.66	0.62	0.59	0.65	0.62	0.59	0.64	0.61	0.59	0.58
8	0.64	0.60	0.57	0.64	0.60	0.57	0.63	0.59	0.56	0.62	0.59	0.56	0.61	0.58	0.56	0.55
9	0.62	0.57	0.54	0.61	0.57	0.54	0.60	0.57	0.54	0.60	0.56	0.54	0.59	0.56	0.53	0.52
10	0.59	0.55	0.52	0.59	0.54	0.52	0.58	0.54	0.51	0.57	0.54	0.51	0.57	0.53	0.51	0.50







Luminaire Lumens:

FL=895.97,FM=114.95,FH=18.74,FVH=6.06

BL=970.66,BM=149.96,BH=19.19,BVH=6.44

UL=0,UH=0

BUG Rating:B2-U0-G0

Intensity data(cd)

C/γ(°)	0.0	1.0	2.0	3.0	4.0	5.0	6.0	7.0	8.0
0.0	3874.25	3883.03	3877.17	3863.13	3833.28	3778.27	3730.87	3672.35	3605.04
45.0	3863.13	3866.64	3874.83	3883.61	3873.08	3853.77	3819.82	3760.71	3702.19
90.0	3867.81	3874.83	3883.61	3878.93	3864.88	3841.48	3787.63	3734.96	3675.27
135.0	3868.98	3868.40	3871.32	3878.93	3883.03	3878.93	3863.13	3833.87	3775.93
180.0	3874.25	3864.88	3859.03	3861.37	3863.71	3873.66	3873.66	3867.23	3839.13
225.0	3863.13	3861.96	3866.05	3868.98	3871.32	3868.98	3848.50	3824.50	3770.08
270.0	3867.81	3867.23	3870.74	3876.00	3880.10	3879.52	3868.40	3847.33	3795.83
315.0	3868.98	3874.25	3880.69	3884.20	3877.17	3859.03	3819.82	3778.86	3719.75
360.0	3874.25	3883.03	3877.17	3863.13	3833.28	3778.27	3730.87	3672.35	3605.04
C/γ(°)	9.0	10.0	11.0	12.0	13.0	14.0	15.0	16.0	17.0
0.0	3507.31	3416.02	3289.61	3176.66	3053.76	2879.95	2731.30	2575.63	2425.23
45.0	3644.84	3555.30	3472.78	3358.08	3254.49	3133.94	3000.51	2817.92	2664.00
90.0	3612.65	3518.43	3430.06	3329.99	3187.78	3062.54	2882.29	2735.40	2589.09
135.0	3718.58	3658.89	3572.27	3491.51	3397.87	3265.03	3147.98	3018.65	2843.08
180.0	3802.85	3755.45	3696.92	3613.82	3536.57	3448.20	3329.40	3221.72	3101.75
225.0	3716.24	3654.79	3567.59	3486.24	3400.22	3299.56	3162.03	3042.64	2914.48
270.0	3739.65	3677.61	3614.41	3522.53	3439.43	3344.62	3243.38	3097.65	2965.39
315.0	3657.71	3569.35	3486.24	3390.85	3286.10	3140.38	3014.55	2883.46	2706.14
360.0	3507.31	3416.02	3289.61	3176.66	3053.76	2879.95	2731.30	2575.63	2425.23
C/γ(°)	18.0	19.0	20.0	21.0	22.0	23.0	24.0	25.0	26.0
0.0	2234.45	2076.44	1918.43	1758.66	1607.67	1432.69	1161.38	1161.38	1041.29
45.0	2511.84	2357.34	2158.95	1998.60	1841.18	1649.81	1511.69	1378.85	1227.86
90.0	2401.24	2250.25	2086.97	1928.96	1729.98	1584.26	1446.73	1145.52	1145.52
135.0	2696.19	2548.13	2359.69	2202.26	2045.42	1885.65	1684.92	1540.37	1397.58
180.0	2976.51	2800.36	2644.69	2497.21	2305.26	2150.76	1990.99	1803.14	1652.73
225.0	2771.68	2577.39	2424.06	2271.32	2078.19	1920.18	1731.15	1585.43	1451.42
270.0	2828.45	2647.03	2483.17	2291.80	2131.45	1973.44	1818.94	1633.42	1495.89
315.0	2555.15	2399.48	2193.48	2033.13	1835.32	1676.73	1536.86	1406.94	1145.11
360.0	2234.45	2076.44	1918.43	1758.66	1607.67	1432.69	1161.38	1161.38	1041.29
C/γ(°)	27.0	28.0	29.0	30.0	31.0	32.0	33.0	34.0	35.0
0.0	917.11	761.49	644.86	534.78	428.44	303.73	213.96	139.11	82.17
45.0	1108.47	986.16	828.15	707.01	595.82	459.46	357.05	307.89	307.89
90.0	1053.81	927.70	809.31	662.01	548.71	415.10	312.33	221.45	129.74
135.0	1275.85	1135.40	1014.25	861.51	746.81	631.52	496.91	389.82	315.49
180.0	1516.96	1384.12	1233.71	1122.52	1002.55	877.90	727.49	608.69	501.60
225.0	1153.65	1153.65	1069.91	940.34	792.39	670.43	556.96	451.38	326.20
270.0	1370.66	1250.10	1114.91	996.70	871.46	719.89	603.43	493.40	361.14
315.0	1145.11	1028.77	912.83	790.52	650.42	538.11	425.05	321.76	209.57
360.0	917.11	761.49	644.86	534.78	428.44	303.73	213.96	139.11	82.17
C/γ(°)	36.0	37.0	38.0	39.0	40.0	41.0	42.0	43.0	44.0
0.0	69.47	62.27	57.35	52.67	50.10	48.11	46.17	43.89	42.14
45.0	95.80	71.57	63.79	58.05	53.37	50.39	48.28	46.06	44.24
90.0	83.39	69.00	61.92	56.24	52.61	49.98	47.99	45.53	43.66
135.0	315.49	112.66	78.42	69.06	62.38	57.88	53.14	50.62	48.46
180.0	368.17	318.42	318.42	102.18	72.45	64.49	57.64	53.78	50.68
225.0	234.73	157.60	97.73	68.94	62.15	56.12	52.61	49.92	47.58
270.0	311.40	311.40	102.65	72.04	64.55	57.82	54.25	51.27	49.04
315.0	136.42	79.94	68.12	61.62	56.24	52.73	50.15	47.64	45.71
360.0	69.47	62.27	57.35	52.67	50.10	48.11	46.17	43.89	42.14

Intensity data(cd)

C/γ(°)	45.0	46.0	47.0	48.0	49.0	50.0	51.0	52.0	53.0
0.0	39.91	38.45	37.22	35.76	34.59	33.36	32.13	30.43	29.03
45.0	42.08	40.38	38.80	37.51	36.05	35.05	33.77	32.54	30.84
90.0	41.90	39.80	38.27	37.04	35.64	34.47	33.24	31.66	30.26
135.0	46.00	43.95	41.67	39.85	38.39	36.64	35.46	34.29	33.01
180.0	48.40	46.29	44.48	42.66	40.50	38.98	37.63	36.11	35.00
225.0	45.76	43.83	42.14	40.03	38.57	37.22	35.99	34.59	33.42
270.0	46.70	44.77	42.96	41.14	39.09	37.81	36.64	35.11	33.94
315.0	43.83	42.02	39.97	38.45	37.22	36.05	34.53	33.30	31.60
360.0	39.91	38.45	37.22	35.76	34.59	33.36	32.13	30.43	29.03
C/γ(°)	54.0	55.0	56.0	57.0	58.0	59.0	60.0	61.0	62.0
0.0	27.80	26.69	25.46	24.52	23.70	22.71	22.18	21.59	21.01
45.0	29.55	28.21	27.10	25.87	25.05	23.88	23.12	22.47	21.95
90.0	28.85	27.62	26.28	25.34	24.46	23.58	22.59	22.06	21.48
135.0	31.31	29.85	28.50	27.39	26.10	25.11	24.23	23.17	22.47
180.0	33.88	32.30	31.02	29.55	27.80	26.63	25.57	24.70	23.64
225.0	32.19	30.43	29.03	27.68	26.34	25.34	24.46	23.35	22.53
270.0	32.36	30.96	29.50	28.15	26.74	25.69	24.76	23.88	22.71
315.0	30.26	28.85	27.33	26.22	25.34	24.46	23.29	22.53	21.89
360.0	27.80	26.69	25.46	24.52	23.70	22.71	22.18	21.59	21.01
C/γ(°)	63.0	64.0	65.0	66.0	67.0	68.0	69.0	70.0	71.0
0.0	20.07	18.90	18.49	18.38	18.26	18.26	18.20	18.08	18.02
45.0	21.42	20.66	19.61	18.61	18.49	18.38	18.26	18.14	18.08
90.0	20.95	20.13	18.73	18.32	18.20	18.08	18.02	17.91	17.79
135.0	21.95	21.36	20.72	19.43	18.61	18.38	18.20	18.08	17.97
180.0	22.82	22.12	21.59	21.01	20.25	18.96	18.14	17.97	17.79
225.0	21.83	21.30	20.60	19.61	18.55	17.97	17.85	17.73	17.73
270.0	22.06	21.54	21.07	20.19	19.20	18.20	18.02	17.91	17.85
315.0	21.36	20.66	19.72	18.67	17.97	17.79	17.67	17.62	17.50
360.0	20.07	18.90	18.49	18.38	18.26	18.26	18.20	18.08	18.02
C/γ(°)	72.0	73.0	74.0	75.0	76.0	77.0	78.0	79.0	80.0
0.0	17.91	17.62	17.26	16.68	16.27	15.80	15.22	14.63	13.75
45.0	17.97	17.85	17.67	17.26	16.80	16.27	15.80	15.45	15.04
90.0	17.67	17.44	17.21	16.80	16.27	15.80	15.33	14.57	14.05
135.0	17.79	17.62	17.50	17.26	16.91	16.50	16.04	15.57	14.92
180.0	17.67	17.56	17.50	17.32	17.21	16.97	16.62	16.09	15.68
225.0	17.67	17.62	17.56	17.44	17.21	16.74	16.33	15.92	15.51
270.0	17.85	17.79	17.73	17.62	17.38	17.09	16.62	16.09	15.63
315.0	17.50	17.38	17.15	16.97	16.56	16.09	15.63	15.16	14.57
360.0	17.91	17.62	17.26	16.68	16.27	15.80	15.22	14.63	13.75
C/γ(°)	81.0	82.0	83.0	84.0	85.0	86.0	87.0	88.0	89.0
0.0	12.41	11.24	10.48	10.07	9.83	9.60	9.42	9.48	9.42
45.0	14.16	13.23	11.76	10.59	10.07	9.83	9.60	9.42	9.42
90.0	13.46	13.05	11.76	10.83	10.12	9.77	9.60	9.48	9.48
135.0	14.40	13.87	13.05	12.29	11.12	10.36	9.95	9.71	9.54
180.0	15.22	14.69	14.16	13.58	12.82	11.59	10.59	10.01	9.77
225.0	14.92	14.34	13.69	12.58	11.29	10.42	10.01	9.77	9.60
270.0	15.10	14.34	13.52	12.70	11.35	10.48	10.07	9.83	9.60
315.0	13.81	13.05	12.11	11.06	10.48	10.01	9.83	9.60	9.48
360.0	12.41	11.24	10.48	10.07	9.83	9.60	9.42	9.48	9.42

Intensity data(cd)

C/γ(°)	90.0
0.0	9.42
45.0	9.42
90.0	9.48
135.0	9.54
180.0	9.60
225.0	9.48
270.0	9.48
315.0	9.48
360.0	9.42